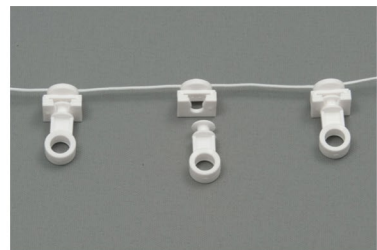
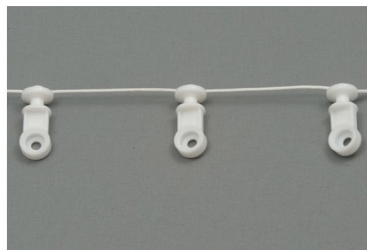
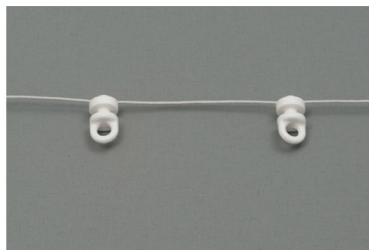
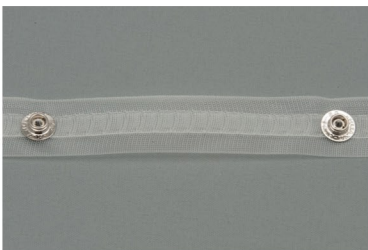
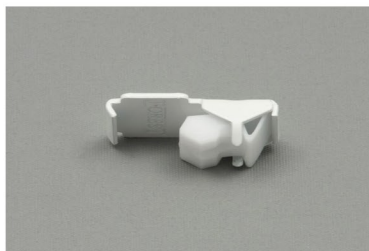
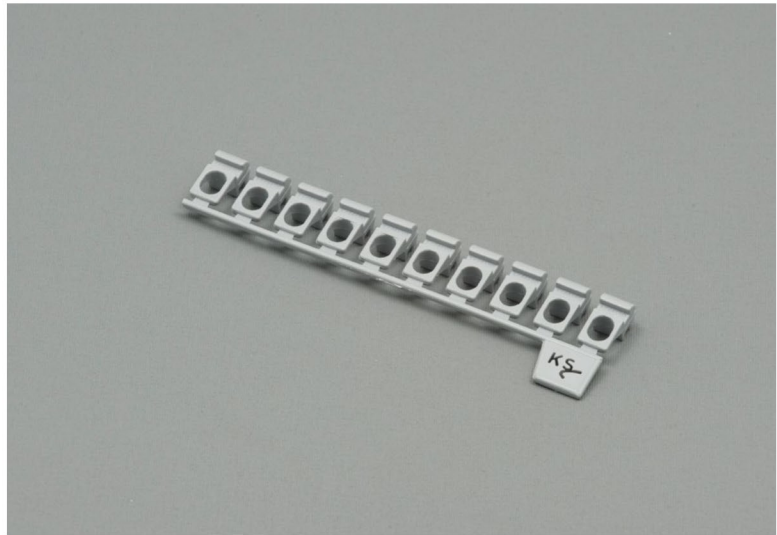
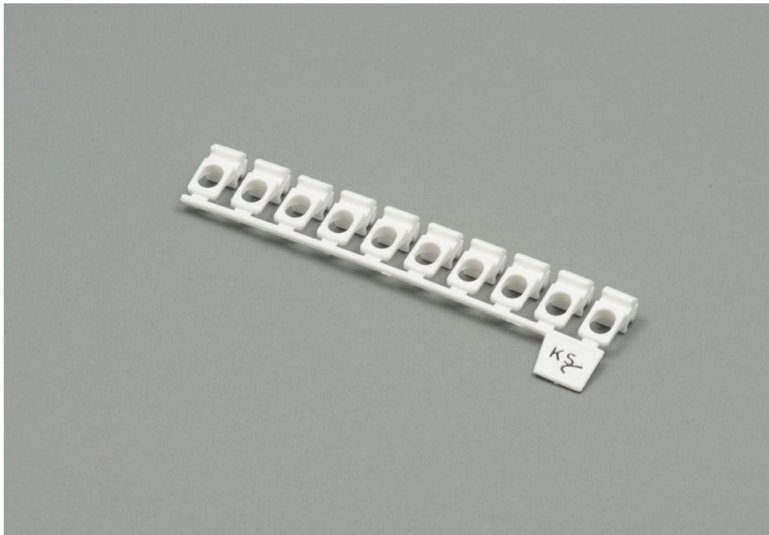
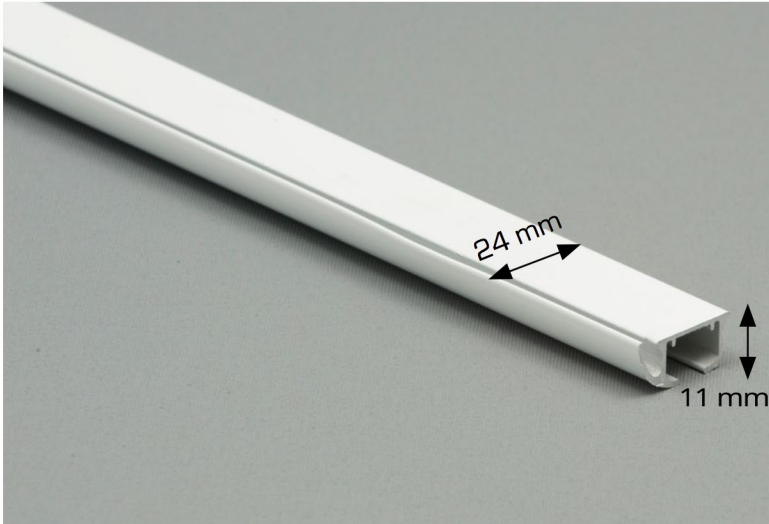


DS - DESIGN SYSTEM

DRAPERY TRACKS





DS - Design System

- powder coated aluminum track - White
- special pre-applied dry lubricant for super smooth operation
- for hand draw pinch pleat, shirred or ripple/easy fold draperies
- rated for 6 lbs per foot of drapery (24" bracket spacing)

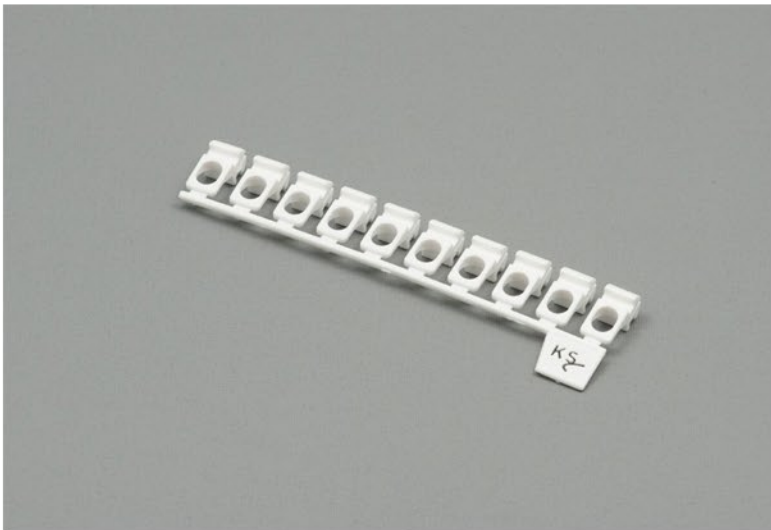
H DS-500-25	5 mtr (196")	White
-------------	--------------	-------



DS - Design System

- powder coated aluminum track - Silver Grey
- special pre-applied dry lubricant for super smooth operation
- for hand draw pinch pleat, shirred or ripple/easy fold draperies
- rated for 6 lbs per foot of drapery (24" bracket spacing)

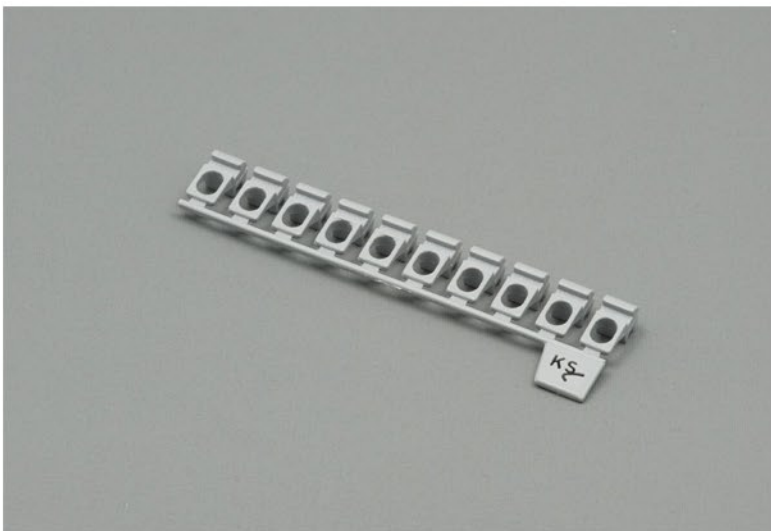
H DS-500-03	5 mtr (196")	Silver Grey
-------------	--------------	-------------



KS / DS / CKS Slides White

- sold in strips of 10 slides for easy assembly

H KS2001-25



KS Slides Silver / Grey

- Sold in strips of 10 slides for easy assembly

H KS2001-03



KS / DS Stop Carrier

- Use as lead slide. Top of carrier causes friction to reduce drape bounce back
- White only

H KS2003-25



KS / DS / CKS Carrier with hook

- White only

H KS2201-25



DS End Cap / Stop White

- End cap and end stop combined

H DS2309-25



DS Short End Cap / Stop White

- For one way draw where carrier needs to get close to

H DS2310-25



DS End Cap / Stop Silver Grey

- End cap and end stop combined

H DS2309-03



DS Short End Cap / Stop Silver Grey

- For one way draw where carrier needs to get close to end of track

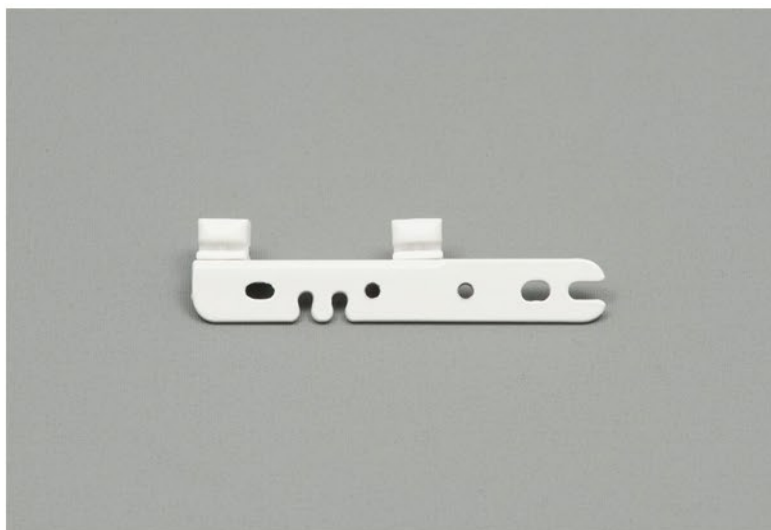
H DS2310-03



KS / DS Twist End Stop White

- Can be placed in the endcaps or anywhere along the track for multiple

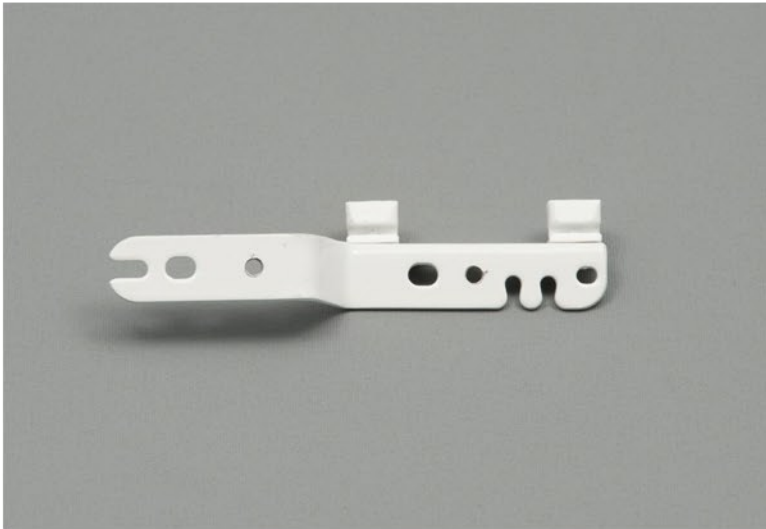
H KS2305-25



KS / DS Left Underlap Master Carrier

- Will go through curves

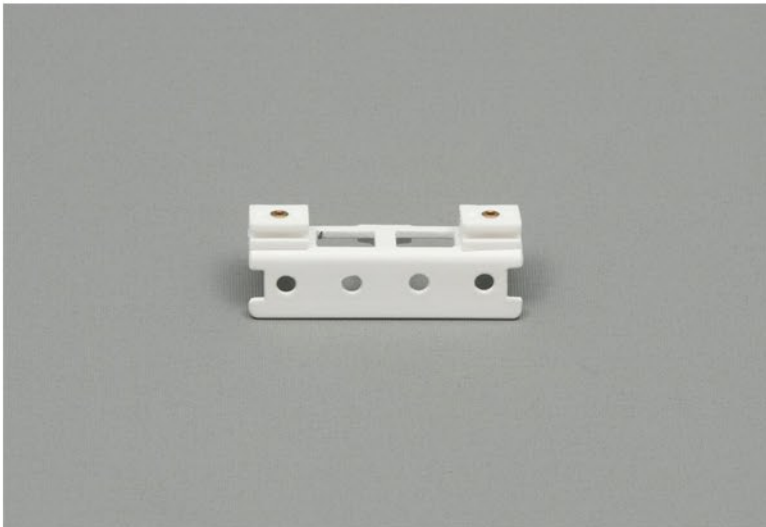
H KS2526-25



KS / DS Right Overlap Master Carrier

- Will go through curves

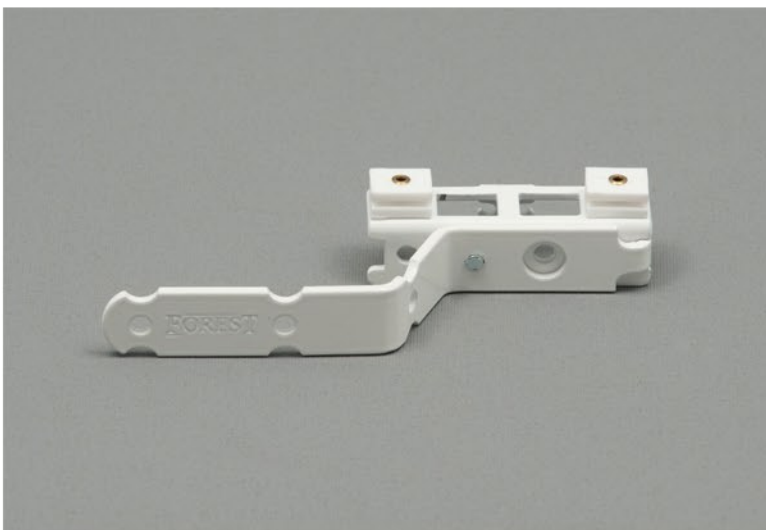
H KS2525-25



KS / DS / CKS Underlap Reversible Master Carrier

- Will go through curves
- Can be used as left or right

H KS2530-25



KS / DS / CKS Overlap Reversible Master Carrier

- Will go through curves
- Can be used as left or right - arm can be removed and attached in the

H KS2529-25



EasyFold Underlap Master Carrier White

- Will go through curves
- Can accept hooks or snaps
- Integrated baton holder

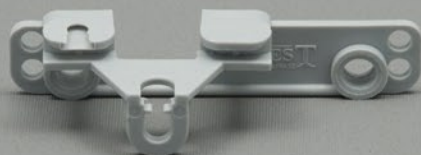
H KS2543-25



EasyFold Overlap Master Carrier White

- Will go through curves
- Can accept hooks or snaps
- Integrated baton holder

H KS2542-25



EasyFold Underlap Master Carrier Silver/Grey

- Will go through curves
- Can accept hooks or snaps
- Integrated baton holder

H KS2543-03



EasyFold Overlap Master Carrier Silver/Grey

- Will go through curves
- Can accept hooks or snaps
- Integrated baton holder

H KS2542-03



Left Hand Butt Master

- Will go through curves
- Reversible

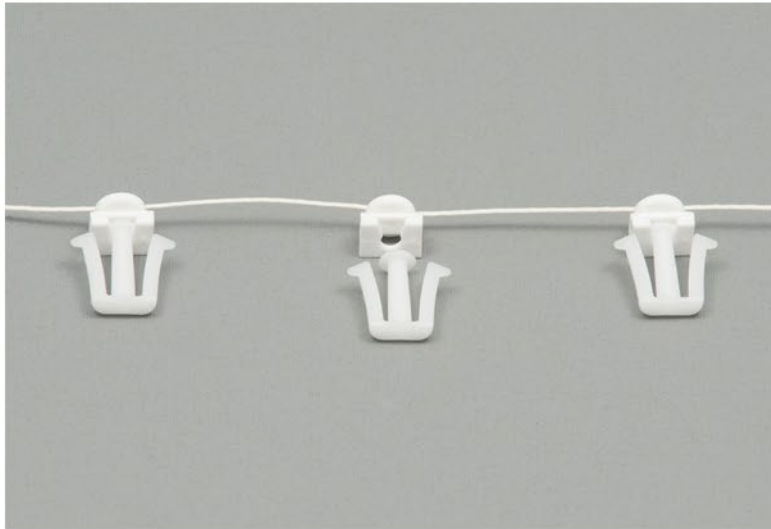
H KS52409-25



Right Hand Butt Master

- Will go through curves
- Reversible

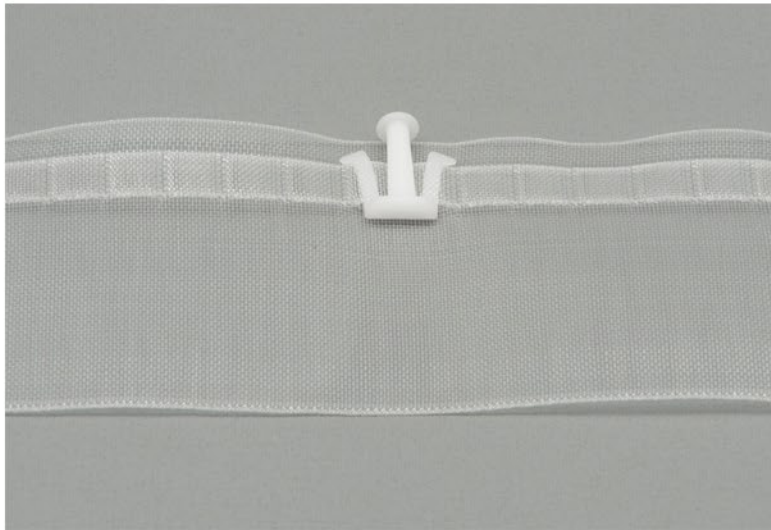
H KS52410-25



2 piece EasyFlex Jointed Carriers

- Hook spacing on tape creates fullness of drape

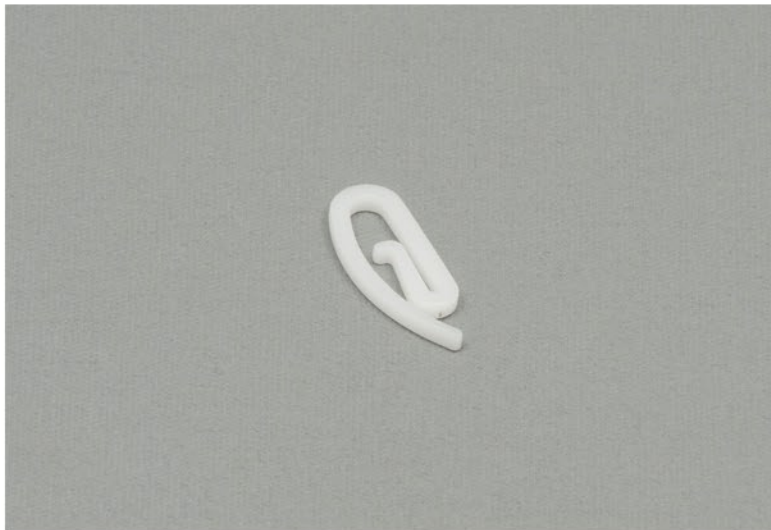
H KS9006-060	2 5/8" spacing
H KS9006-080	2 3/8" spacing
H HK9006-100	2 1/8" spacing



EasyFlex Tape (carrier hook not included)

- 75mm (3")

H KS9005



EasyFlex End Hook

- Specially designed to clip into the Easy Flex Butt master, standard shirring hooks may not fit properly

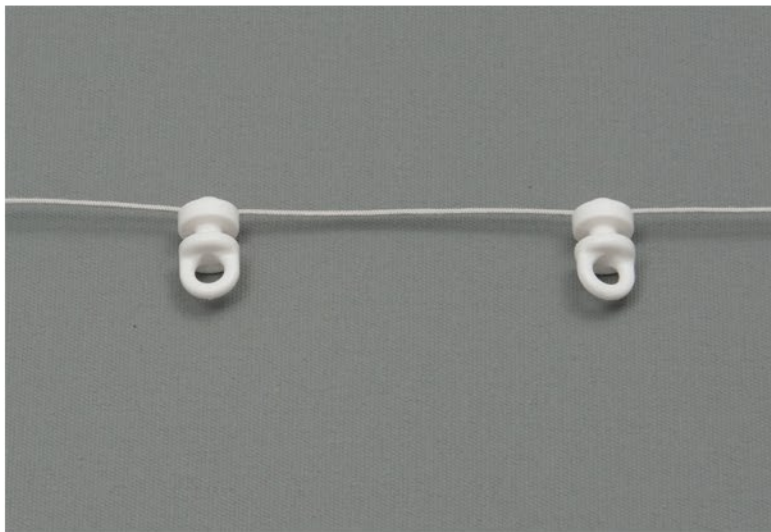
H KS9007



Easy Flex Butt Master

- Use with H KS9007 Easy Flex End Hooks

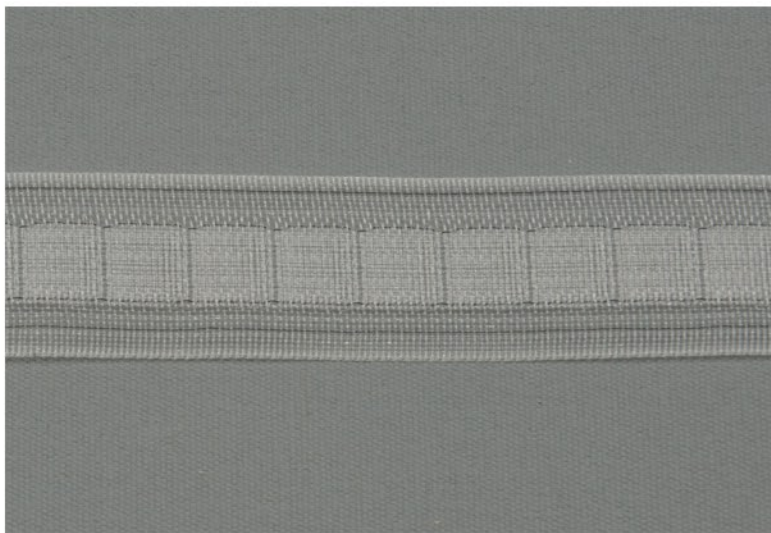
H KS9008-25



Pulse Tape Carrier

- The beauty of Architectural Pleats without the hassle of snaps

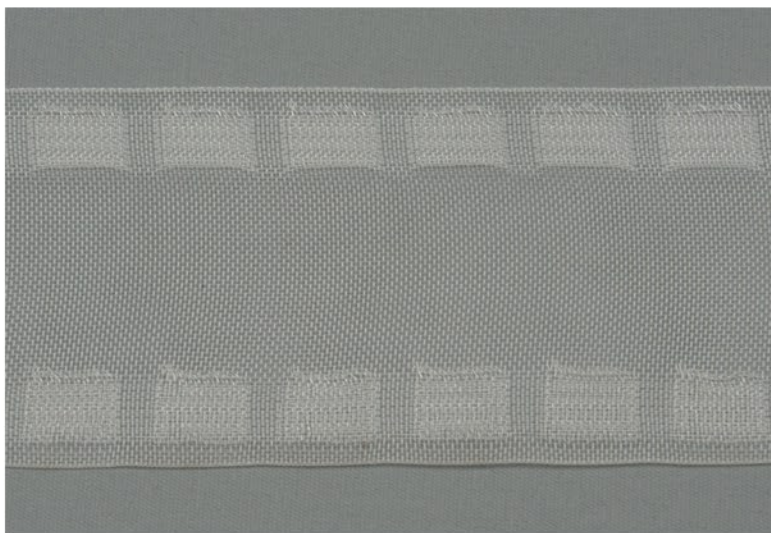
H J1010-040	3 1/6" spacing
H J1010-060	2 5/8" spacing
H J1010-100	2 1/8" spacing



Translucent Pulse Tape 25mm

- The beauty of Architectural Pleats without the hassle of snaps
- 25mm width (.984")
- Do not be restricted by fixed snap tape spacing.

H 1758-025



Translucent Pulse Tape 75mm

- The beauty of Architectural Pleats without the hassle of snaps
- 75mm width (2.96")
- Do not be restricted by fixed snap tape spacing.

H 1758-075



Shirring Hooks Metal

- For Pulse or Shirring tapes

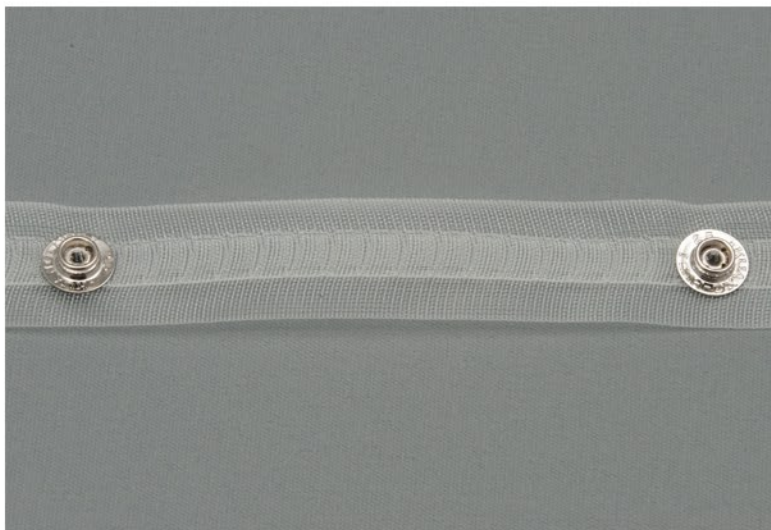
H 1749



Snap Tape

- Snaps spaced every 4.25"

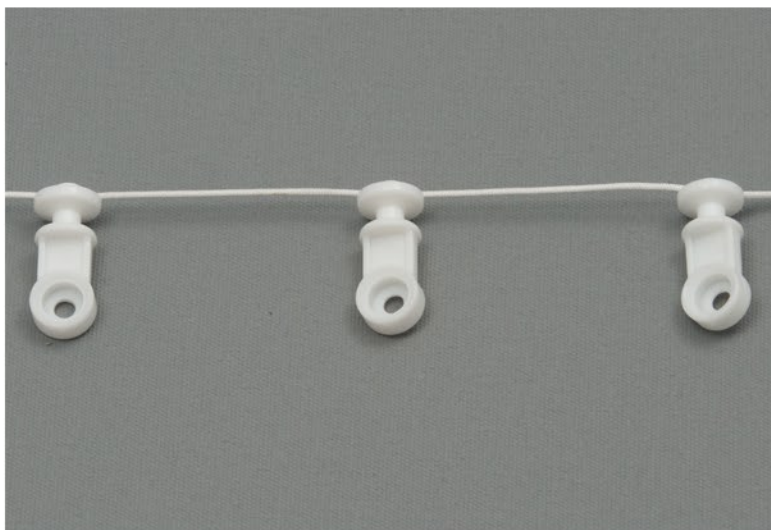
HJ1011



Translucent Snap Tape

- Snaps spaced every 4.25"

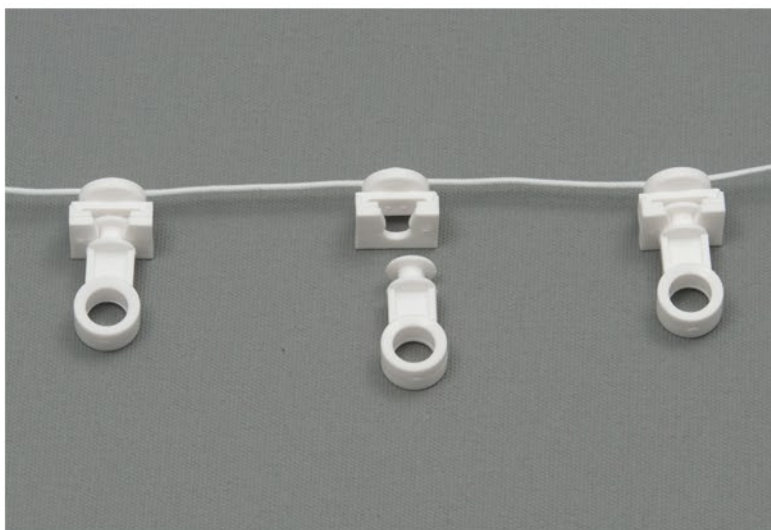
HJ1013



Single Sided Snap Tape Carrier

- Rounded back is easy on your fingers when installing

HJ1008s-040	40% - 3 1/16" spacing
HJ1008s-060	60% - 2 5/8" spacing
HJ1008s-080	80% - 2 3/8" spacing
HJ1008s-100	100% - 2 1/8" spacing
HJ1008s-120	120% - 1 7/8" spacing



Double Sided Two Piece Snap Tape Carrier

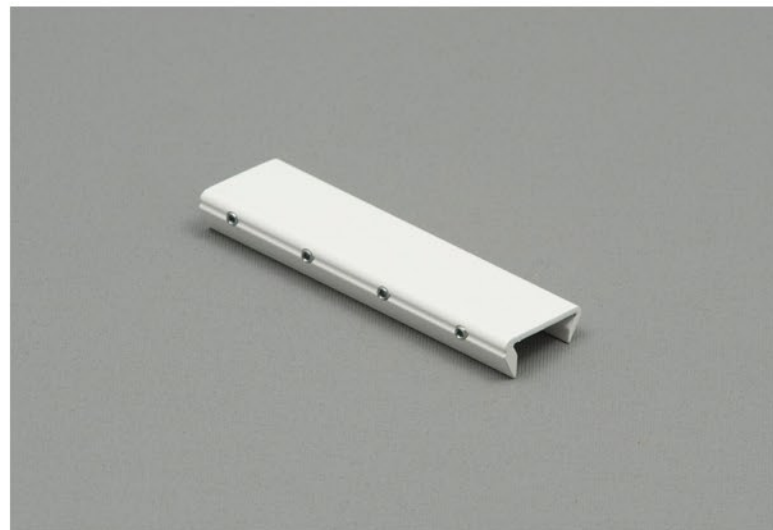
- Easily install snap tape tabs at the workroom or when drape is down
- Two piece carriers help eliminate tab breakage

HJ1009-040	40% - 3 1/16" spacing
HJ1009-060	60% - 2 5/8" spacing
HJ1009-080	80% - 2 3/8" spacing
HJ1009-100	100% - 2 1/8" spacing
HJ1009-120	120% - 1 7/8" spacing



Internal KS/DS splice

H KS3903



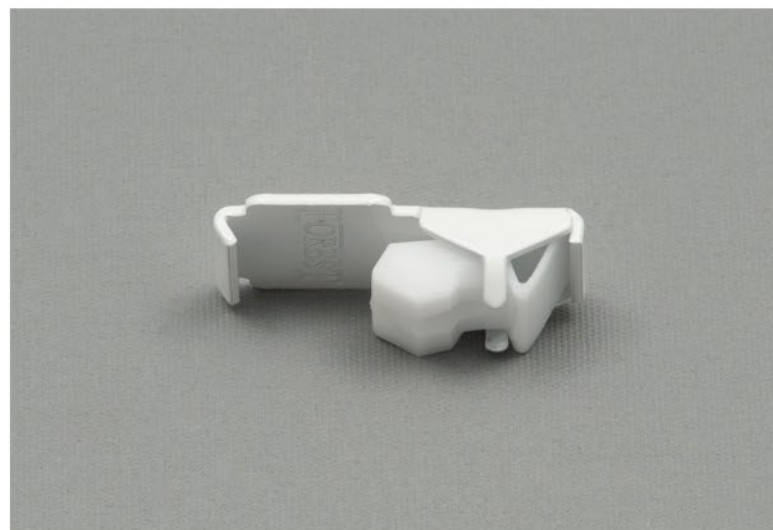
Heavy Duty KS/DS /CKS splice

H KS3905-25



Ceiling Splice Brackets

H KS3901-25



Smart Klick Ceiling Brackets

H KS3003-25



Ceiling Brackets - White

H KS3001-25



Ceiling Brackets - Silver / Grey

H KS3001-03



Smart Klick Brackets 42mm (1.653")

H KS3208-25



Smart Klick Brackets 60mm (2.362")

H KS3209-25



Heavy Duty Smart Klick Bracket 75mm (2.95")

H KS3280-25



Heavy Duty Smart Klick Bracket 100mm (3.94")

H KS3282-25



Heavy Duty Smart Klick Double Bracket

H KS3281-25 150mm (5.91")

H KS3283-25 200mm (7.87")



Smart Klick Adjustable Bracket White

- 3 - 4.5"

H KS53202-25



Smart Klick Adjustable Bracket Silver / Grey

- 3 - 4.5"

H KS53202-03



Smart Klick Adjustable Double Bracket White

- 3 - 4.5" & 6.5" - 7.5"

H KS53206-25



Smart Klick Adjustable Double Bracket Silver / Grey

- 3 - 4.5" & 6.5" - 7.5"

H KS53206-03

Bends



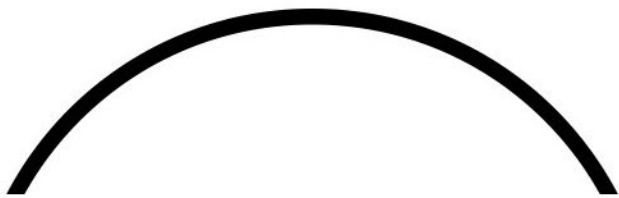
DS can be bent with a 4" radius bend

- Drawing or Template required
- Some restrictions apply, send drawing or template for approval
- Note bent and curved rods often need to be shipped viga transport trailer at higher freight rates

H Bend KS

DS Bend

Curves



DS we do not curve DS or DSXL rods