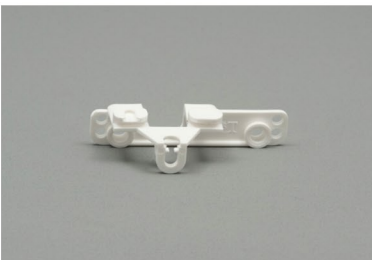
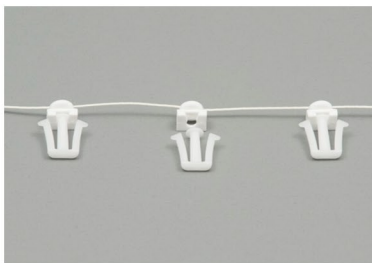
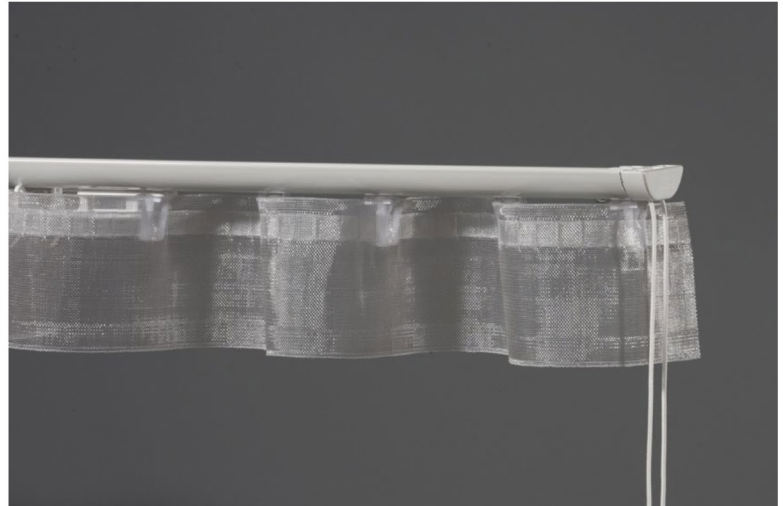
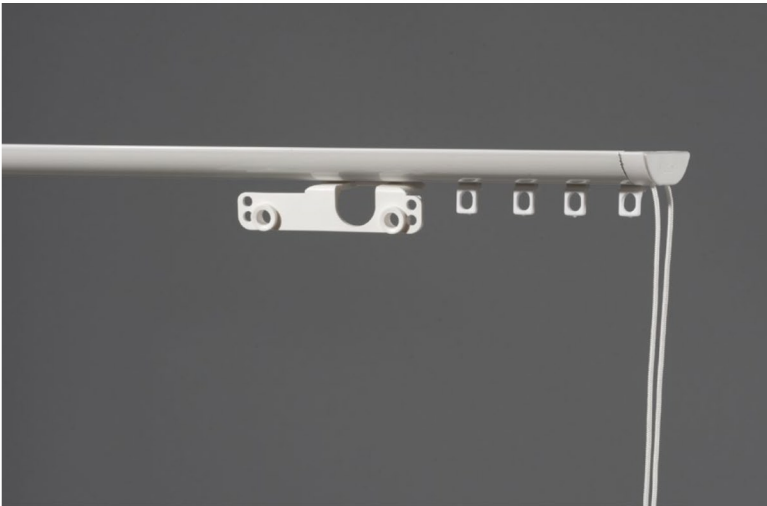
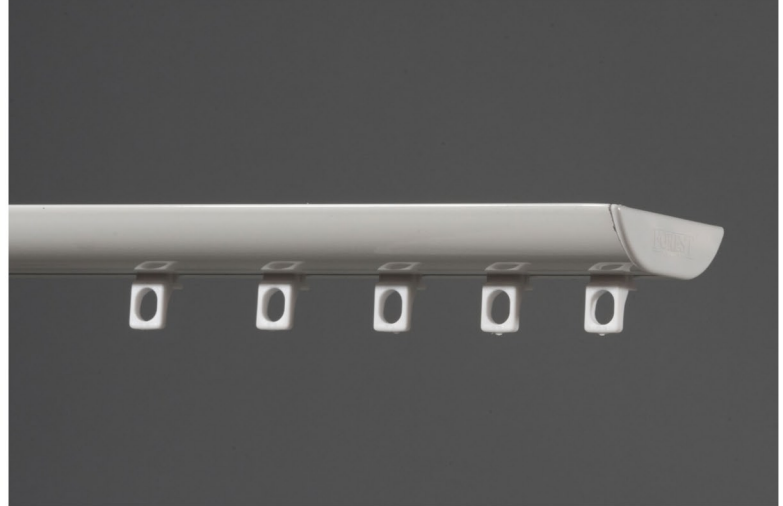
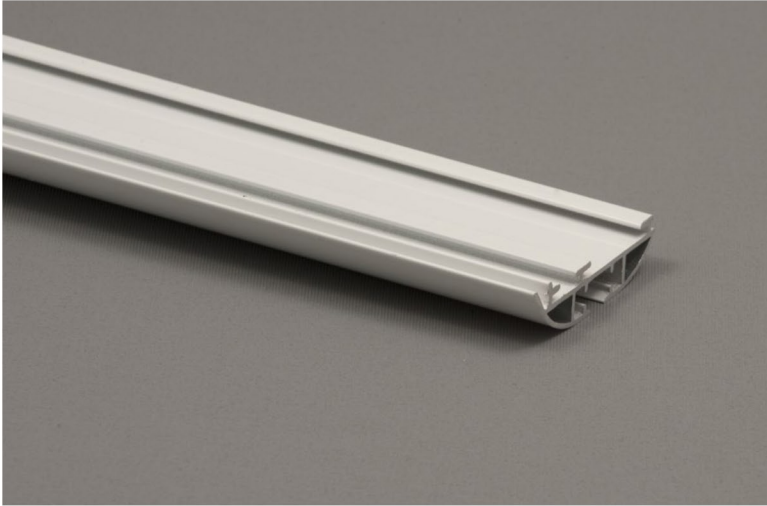
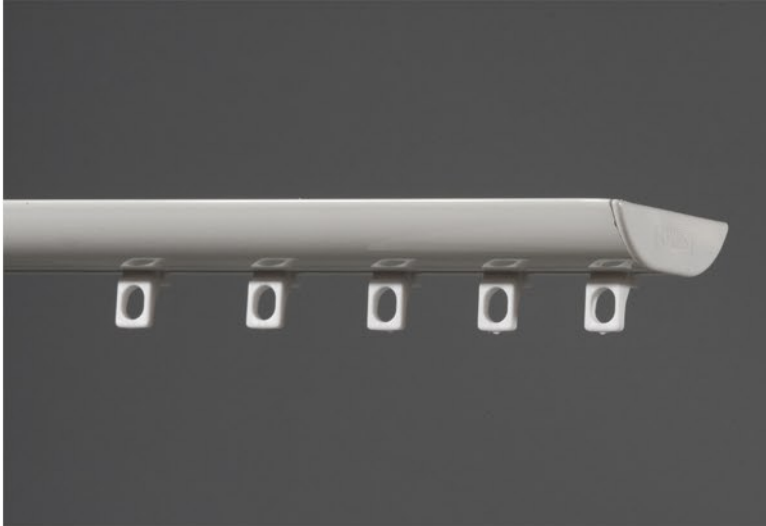


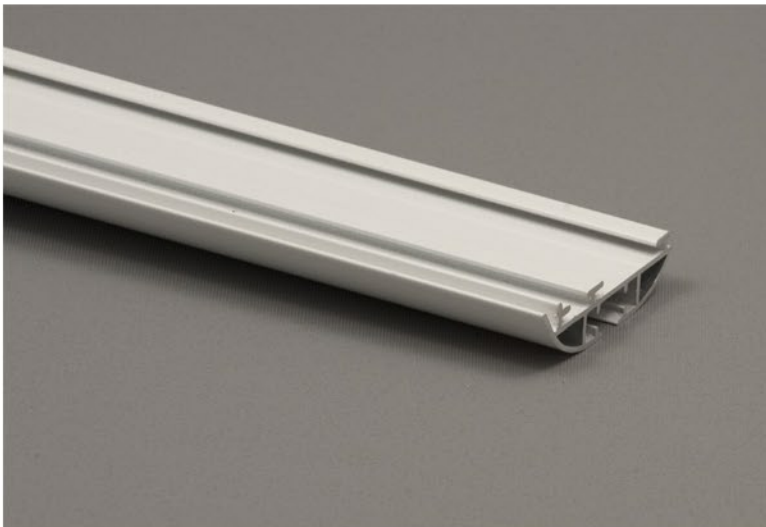
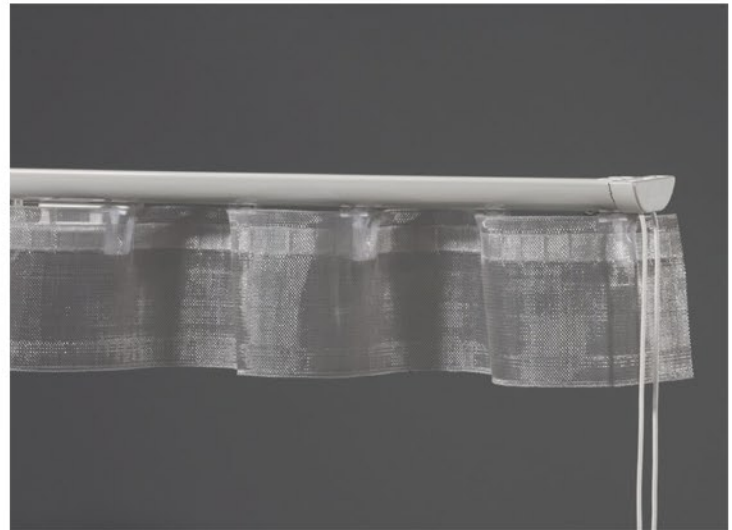
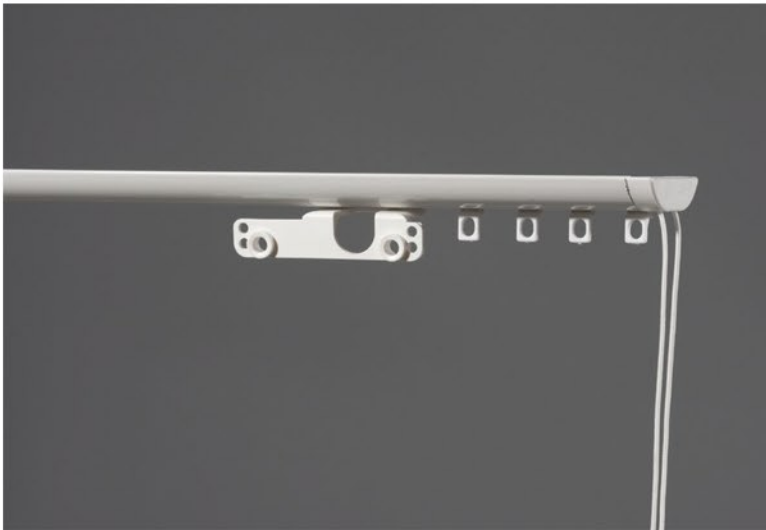
DSXL - DESIGN SYSTEM EXTRA LARGE DRAPERY TRACKS





DSXL

DSXL is a sleek ceiling mounted track for both hand and cord draw installations.



DSXL Track

H DSXL-600-25



DSXL Swivel Ceiling Bracket

H DSXL0003



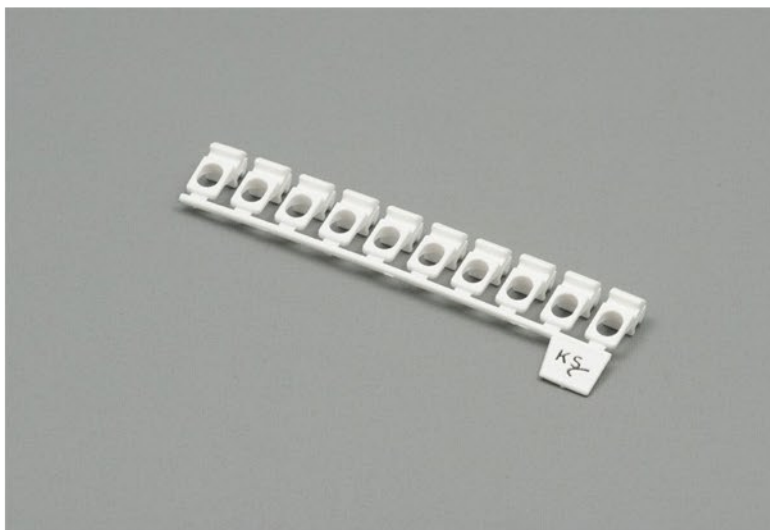
DSXL Short Endcap

H DSXL0001



DSXL Corded Endcap

H DSXL0002



KS / DS / DSXL/ CKS Slides White

- sold in strips of 10 slides for easy assembly

H KS2001-25



KS / DS / CKS Carrier with hook

- White only

H KS2201-25



End Stop (nut and bolt)

- Size M6 x 12.7

H J2011



EasyFold Underlap Master Carrier White

- Can accept hooks or snaps
- Integrated baton holder
- Master carrier is reversed and the baton holder is cut off for corded installations

H KS2543-25



EasyFold Overlap Master Carrier White

- Can accept hooks or snaps
- Integrated baton holder
- Master carrier is reversed and the baton holder is cut off for corded installations

H KS2542-25



CKS Cord Connector

- Used to connect cord to master carrier

H KS2805-25



2.2mm Cord

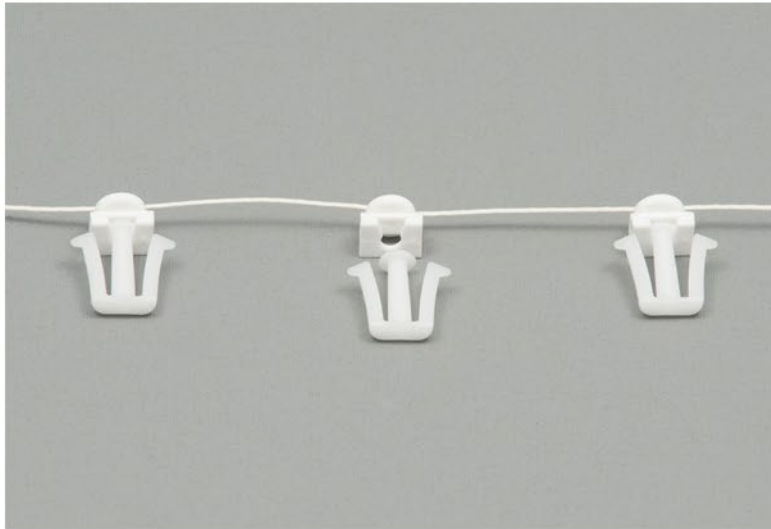
- non stretch polyester cord
- designed for use with DSXL tracks

H 6002-2.2



SafetyHold3

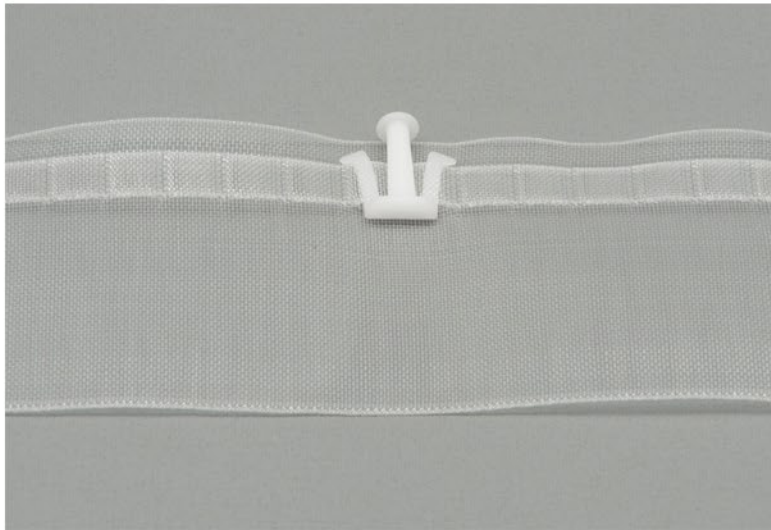
B 3203



2 piece EasyFlex Jointed Carriers

- Hook spacing on tape creates fullness of drape

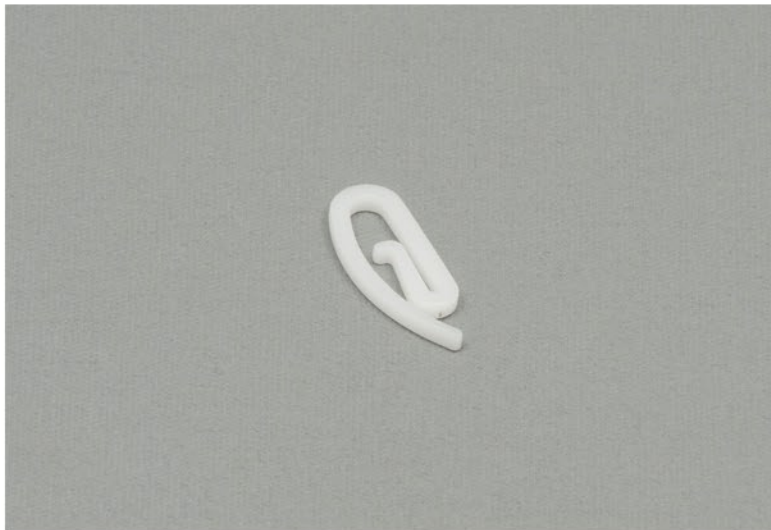
H KS9006-060	3 1/16" spacing
H KS9006-080	2 3/8" spacing
H HK9006-100	2 1/8" spacing



EasyFlex Tape (carrier hook not included)

- 75mm (3")

H KS9005



EasyFlex End Hook

- Specially designed to clip into the Easy Flex Butt master, standard shirring hooks may not fit properly

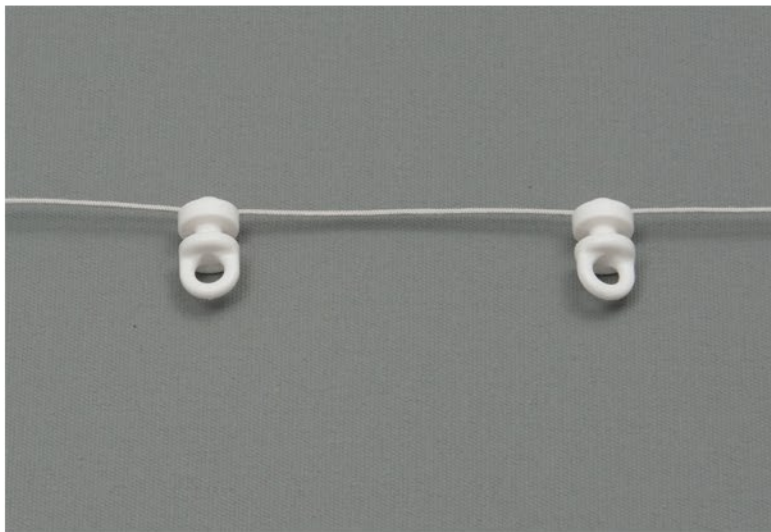
H KS9007



Easy Flex Butt Master

- Use with H KS9007 Easy Flex End Hooks

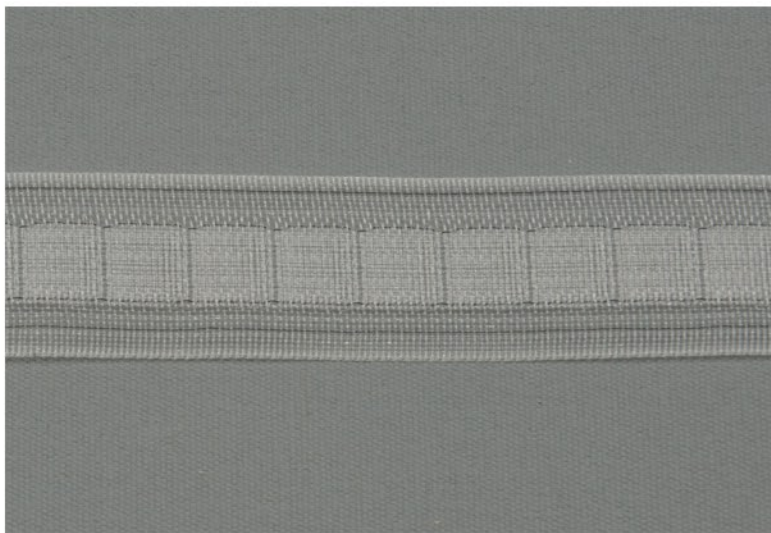
H KS9008-25



Pulse Tape Carrier

- The beauty of Architectural Pleats without the hassle of snaps

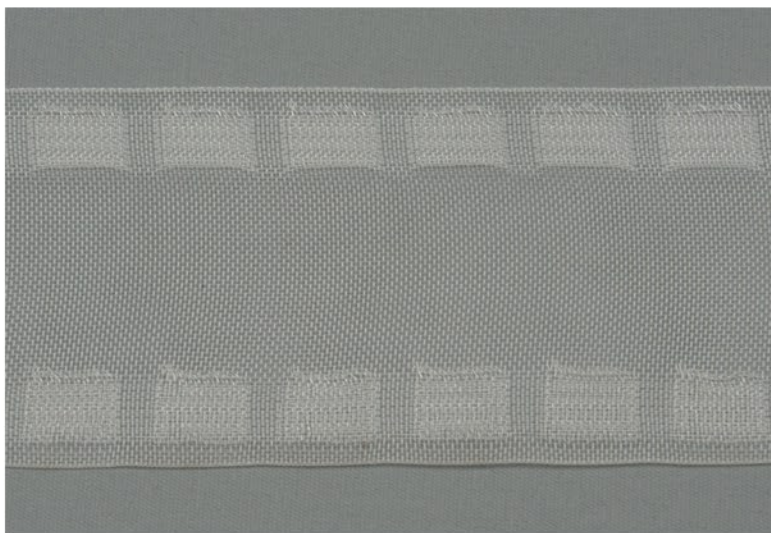
H J1010-040	3 1/16" spacing
H J1010-060	2 5/8" spacing
H J1010-100	2 1/8" spacing



Translucent Pulse Tape 25mm

- The beauty of Architectural Pleats without the hassle of snaps
- 25mm width (.984")
- Do not be restricted by fixed snap tape spacing.

H 1758-025



Translucent Pulse Tape 75mm

- The beauty of Architectural Pleats without the hassle of snaps
- 75mm width (2.96")
- Do not be restricted by fixed snap tape spacing.

H 1758-075



Shirring Hooks Metal

- For Pulse or Shirring tapes

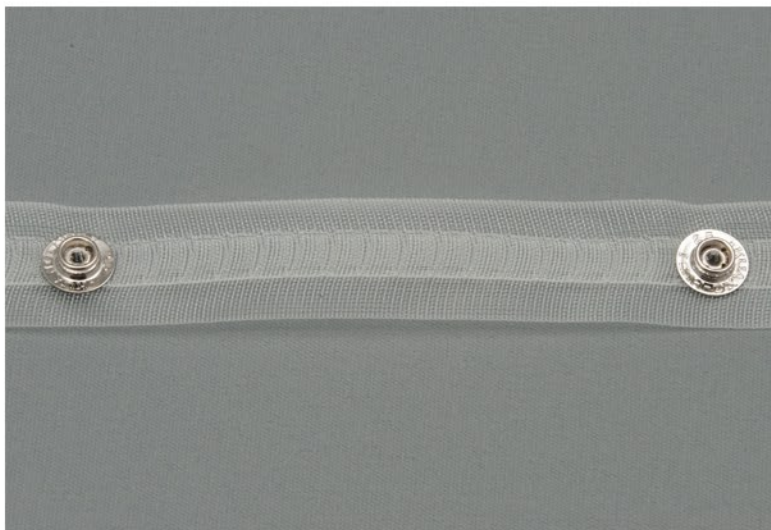
H 1749



Snap Tape

- Snaps spaced every 4.25"

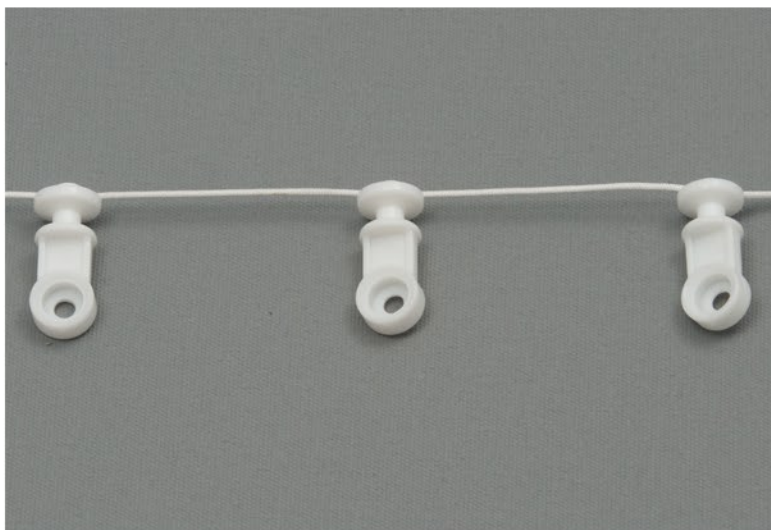
HJ1011



Translucent Snap Tape

- Snaps spaced every 4.25"

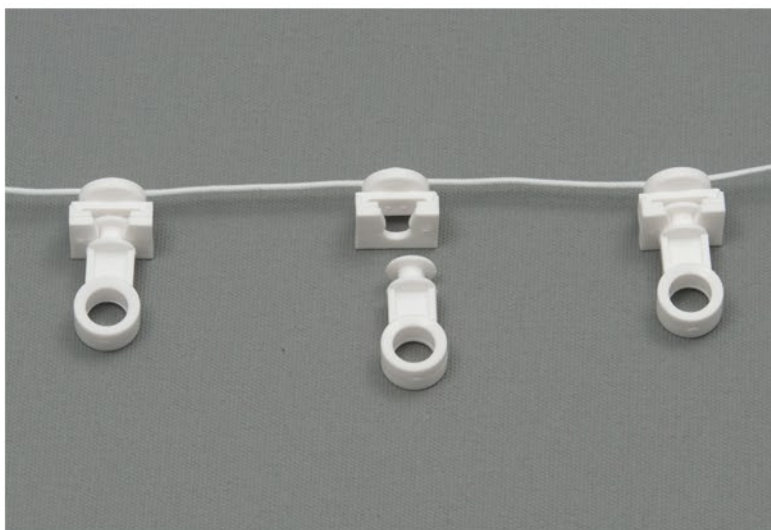
HJ1013



Single Sided Snap Tape Carrier

- Rounded back is easy on your fingers when installing

HJ1008s-040	40% - 3 1/16" spacing
HJ1008s-060	60% - 2 5/8" spacing
HJ1008s-080	80% - 2 3/8" spacing
HJ1008s-100	100% - 2 1/8" spacing
HJ1008s-120	120% - 1 7/8" spacing



Double Sided Two Piece Snap Tape Carrier

- Easily install snap tape tabs at the workroom or when drape is down
- Two piece carriers help eliminate tab breakage

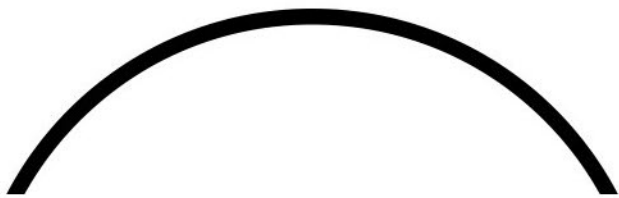
HJ1009-040	40% - 3 1/16" spacing
HJ1009-060	60% - 2 5/8" spacing
HJ1009-080	80% - 2 3/8" spacing
HJ1009-100	100% - 2 1/8" spacing
HJ1009-120	120% - 1 7/8" spacing

Bends



DSXL we do not bend DSXL rods

Curves



DSXL we do not curve DS or DSXL rods